



www.koolance.com

Specifications Sheet

Generated: 2024-04-13

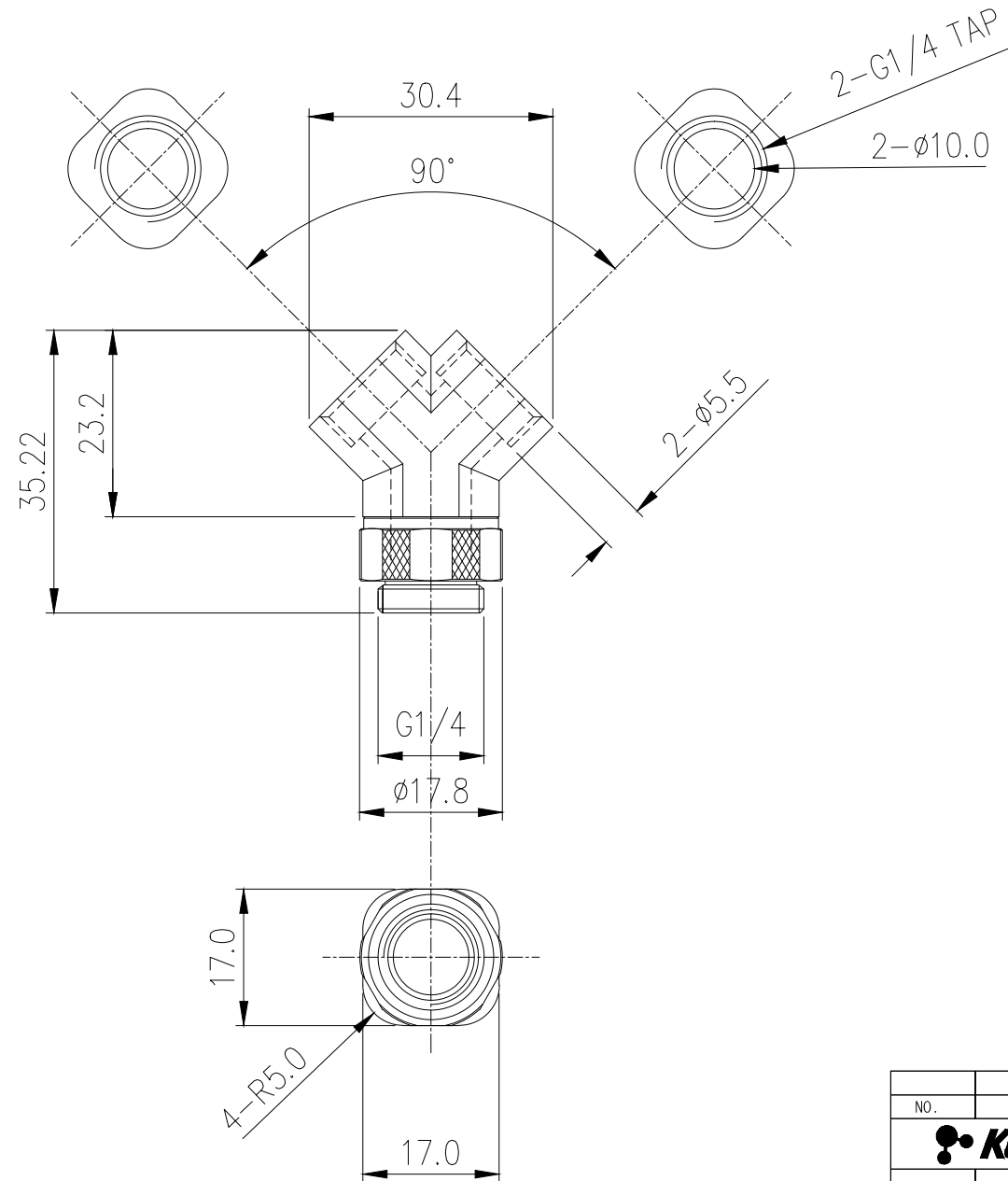
P/N: SPL-YF2MS1G4


Y-Splitter, Dual Female, Single Swivel Male G
1/4 BSPP



Koolance "Y-shape" tubing splitter with one swiveling male and two female G 1/4 BSPP threads. Made of nickel-plated brass with EPDM o-rings.

General	
Weight	0.10 lb (0.05 kg)
Fitting Thread	G 1/4 BSPP
Max Pressure Tolerance @ 25°C	8kgf/cm2 (113.8psi)
Max Temperature Tolerance	120°C (248°F)



NO.		DESCRIPTION			MATER'L		QUANTITY		REMARKS	
					UNIT	MM	APPAR SPL-YF2MS1G4			
					SCALE	N/S	Ass'y			
DATE		BY	BY	BY	APPRO BY					
JAN.14.2021		S.J.LEE								
					3RD ANGLE					
					CODE NO.		DWS. NO.			